

GRAINGER
MUSEUM



GRAINGER
MUSEUM

The Grainger Museum
is open to students
and researchers by
appointment and open
to the public for events
and public programs
throughout the year.

For opportunities to visit and access
the collection and archive, please visit
our website grainger.unimelb.edu.au
or contact grainger@unimelb.edu.au
for enquiries.

Follow us on social media for
ongoing updates: @graingermuseum
on Instagram and Facebook.

Building 140

Grainger Museum

Venue Hire + Events

We acknowledge and pay respect to the
Traditional Owners of the lands upon
which our campuses are situated.



Opened in 1938, the Grainger Museum at the University of Melbourne is the culmination of decades of planning by Australian composer and pianist Percy Grainger (1882-1961). As the only purpose-built autobiographical museum in Australia, Grainger intended his museum to illustrate his 'cosmopolitan and universalist outlook on music', showcasing objects from his life and the wider musical world in which he flourished.

The now heritage-listed and architecturally significant building was designed by University architect John Gawler of firm Gawler and Drummond. Returning to Grainger's original vision for the museum, in one half are displays of collection materials, ranging from Grainger's iconic 'free music' machines to items illustrating his life and times in bespoke display cases from the 1930s. The other half is dedicated to teaching and learning and is also available for performances and events. With its distinctive layout, glamorous Art Deco style architectural detailing, and experiential exhibitions, the Grainger Museum is arguably one of Melbourne's best kept secrets, and a unique and memorable location for your next event.





Rochus Hinkel The Ghost of Grainger 2022
6-minute video, 3D Scan with 80 million points,
5760 x 1080 pixel
Sound Composition: Sydney Miller
3D scanning and video production with Edward Yee
and Melissa Iraheta

Spaces for Hire – Northern Galleries

The Grainger Museum is situated on the University of Melbourne's leafy Parkville Campus, next to the Conservatorium of Music. The museum is a uniquely shaped building, with art-deco era architectural flourishes and interconnected corridors that invite the guest on a journey through different spaces. The right wing of the building houses a flagship exhibition exploring themes of Percy Grainger's original museum. The left wing of the building houses three multi-purpose spaces that can provide a unique setting for long table dinners, cocktail functions, workshops and more. Exhibitions may be opened to your guests for a private viewing as part of your space booking.

AVAILABILITY

Daytimes

Monday to Sunday, 8am – 5pm

Evenings

Monday to Sunday, 6pm – late

*Please note that surcharges apply on weekends

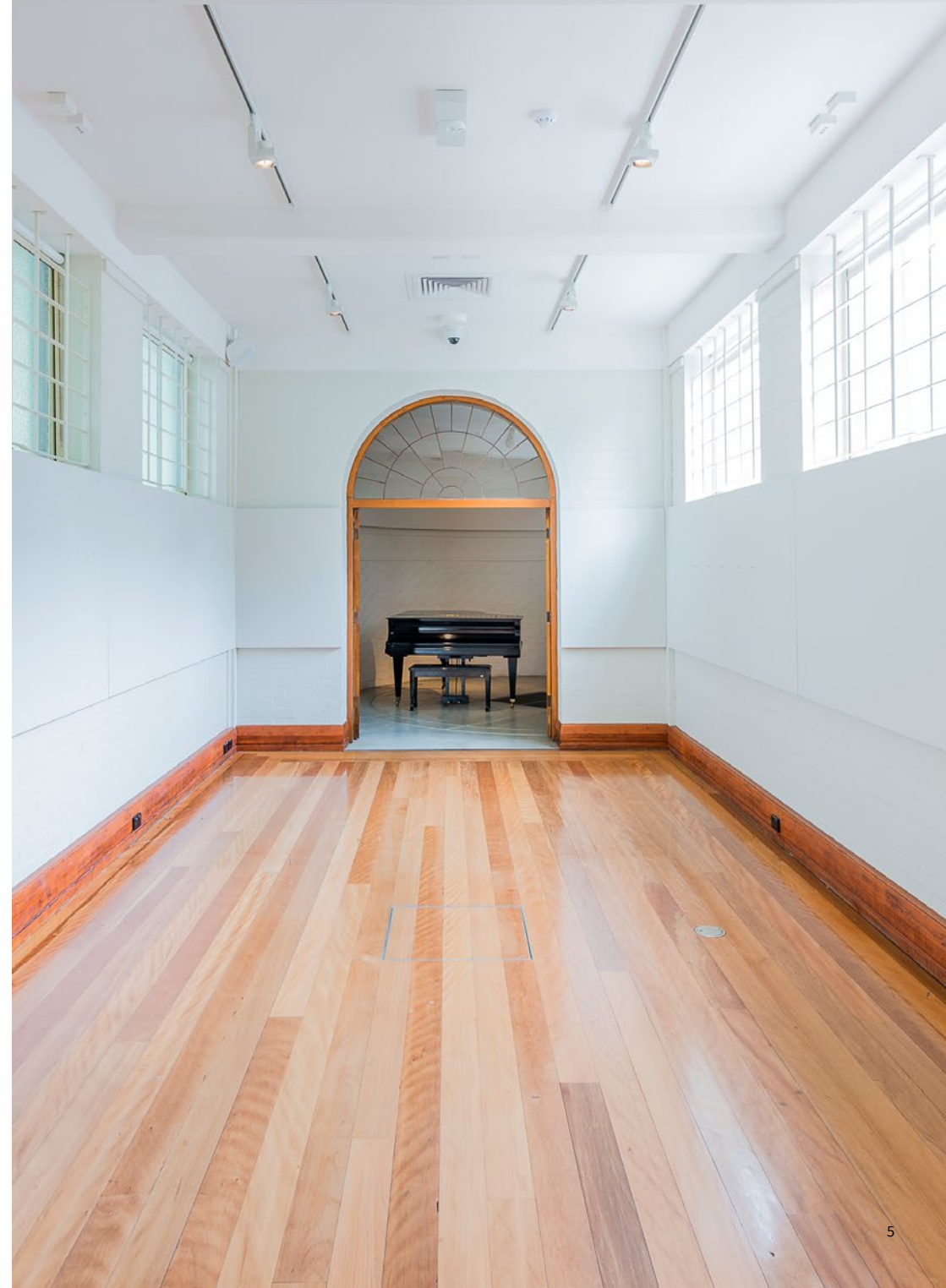
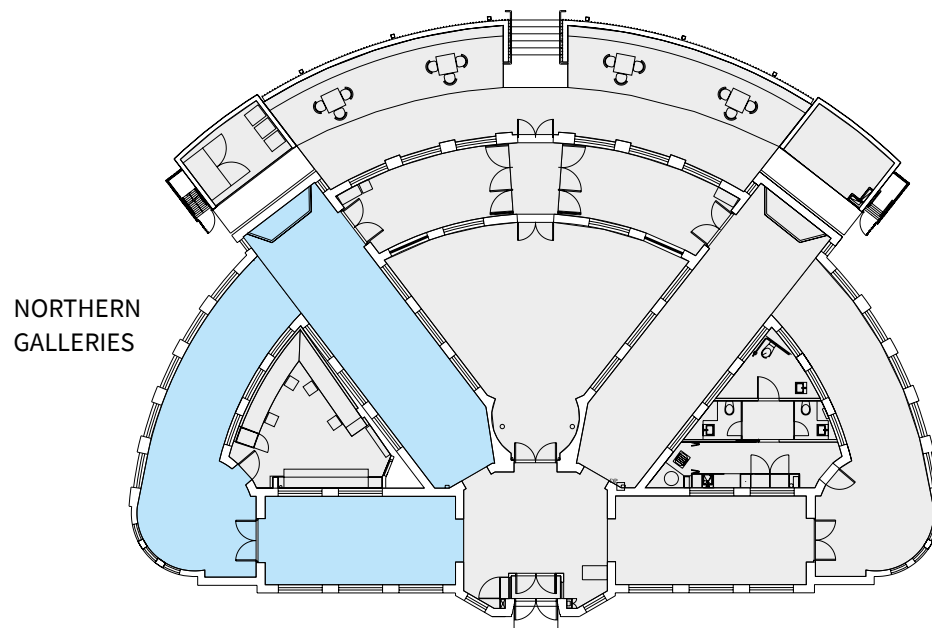
CAPACITY

Cocktail: up to 175,
or 250 including outdoor courtyard

Dining: up to 24 as one long table

Presentation: up to 60 theatre style

FLOOR PLAN



Spaces for Hire – Courtyard

The outdoor courtyard at the Grainger is situated in the heart of the venue, with two access points to the main building on the east and west sides. It is an ideal location for a coffee machine, pop-up bar, pre-dinner drinks, or simply additional seating and standing room in the fresh air, surrounded by the campus trees.

AVAILABILITY

Daytimes

Monday to Sunday, 8am – 5pm

Evenings

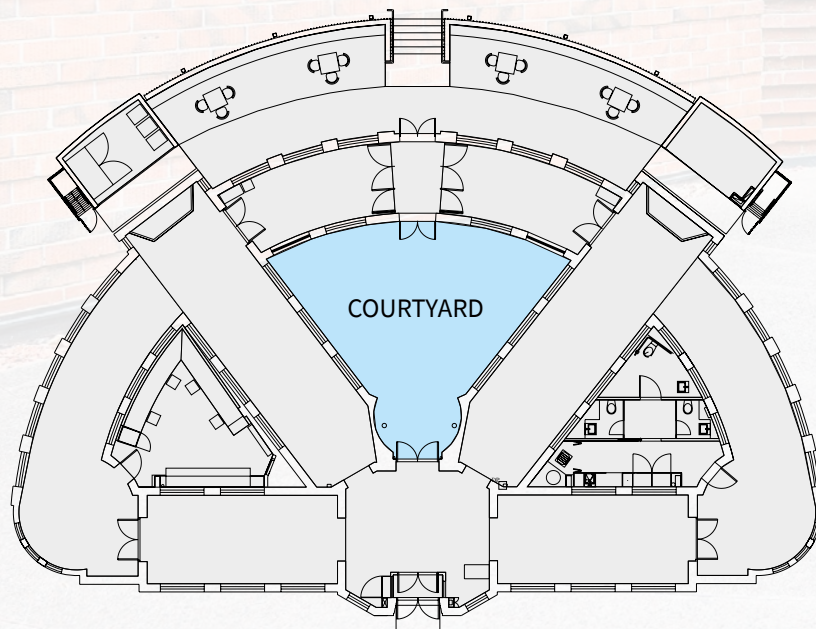
Monday to Sunday, 6pm – late

*Please note that surcharges apply on weekends

CAPACITY

Cocktail: 75

FLOOR PLAN



Exhibition Viewings

As part of your booking at the Grainger, you and your guests are invited to experience *Grainger Amplified*, an immersive exhibition which brings the visitor into the world that Percy Grainger envisaged for his music displays from the 1930s-1950s. This includes both original and playable replicas of Grainger's iconic 'free music' machines. These instruments, which were an invention of Grainger's, can be played by visitors, providing a unique opportunity to experience Grainger's innovation in sound first-hand.

Deepen the guest experience by including a gallery tour with one of the esteemed academics working with the University to provide insights into the history of the museum and of the collection items.



Exhibition Viewings



Creative Programing

The Grainger is an integral part of the vibrant performing arts culture at the University of Melbourne. Speak to us about arranging musical, dance and other creative performances for your event through our networks of talented performing arts students, academics and alumni.



Performance, "Agony in Lines", Sunny Kim,
2023 Photography by Sung Hyun Sohn

Contact
mc-events@unimelb.edu.au
to arrange a site visit
and get planning!



Take a look at some of our other fantastic venues available for your next event:

- Ian Potter Museum of Art (Reopening 2024)
- Buxton Contemporary Art Museum
- Old Quad
- Science Gallery Melbourne
- MPavilion Parkville